

CITY OF HUGHSON COMMUNITY DEVELOPMENT DEPARTMENT

Addendum Number 2

SANTA FE AVENUE RESURFACING PROJECT - PHASE II

To all bidders under specifications for Request for Bids for the Construction of **Santa Fe Avenue Resurfacing Project – PHASE II**, which are to be received by the City of Hughson, until 11:00 A.M. on Wednesday, January 22, 2020:

The intent of this Addendum No. 2 is to add new bid items for Dig-Outs and Paving Fabric, show locations of Dig-Out areas on the plans, plus provide the specification for Dig-Outs and Paving Fabric, reducing AC from 0.30' to 0.20', delete sheet 3 of 7 from original plans and add Digout Plan sheets 1 & 2, and revise the Bid Schedule:

I. Adding **Section 10-1.30, “DIG-OUTS”** to the Bid Documents:

10.1-30 DIG-OUTS (BID ITEM #16)

This work involves the removal of existing roadway per dimensions and locations identified on the plans. Area to be removed will be reconstructed with aggregate base and hot mix asphalt.

Hot mix asphalt concrete for DIG-OUTS shall be ½” HMA Type A Max Medium and shall conform to the provisions in Section 39-2, "Hot Mix Asphalt," of the Standard Specifications.

Measurement and Payment for dig-out areas as shown on the plans shall be at the contract price bid per square foot for Dig-Outs of the type shown on the bid schedule. Said price includes full compensation for furnishing all labor, materials, tools, equipment and for doing all the work involved in constructing dig-outs complete in place, as shown on the plans and specified herein, and no additional allowance will be allowed therefore

II. Adding **Section 10-1.31, “PAVING FABRIC”** to the Bid Documents:

10.1-31 PAVING FABRIC (BID ITEM #17)

The work will consist of furnishing all materials, equipment and labor and performing all operations for installing a Paving Fabric for Paving Fabric treatment.

The surface on which Paving Fabric will be applied must be clean and dry. All base failures will be repaired and all cracks, spalls, potholes or other depressions will be sealed with an approved crack sealer or filled with a mixture for cracks, joints and flangeways of standard specification and to the satisfaction of the Engineer before any crack control system is constructed.

The engineer will decide if the existing pavement surface cannot be rendered sufficiently smooth by crack sealing and patching. In this situation, to receive the Paving Fabric system specified, a leveling binder must be placed prior to construction of the Paving Fabric system. A leveling binder placed on top of any Paving Fabric system shall be placed at a maximum temperature of 300 degrees Fahrenheit.

Bituminous binder course or surface course mixtures placed on top of any Paving Fabric system will be placed at a mix temperature of 300 degrees Fahrenheit.

The paving fabric will be a staple needle-punched, nonwoven polypropylene fabric having the following properties:

Weight (ASTM D 1910) oz./sq. yd., min. 3.6

Grab Tensile Strength (ASTM D 1682) %, min 90.0

Grab Elongation at Break (ASTM D 1682)% min-max 40-100

Asphalt Retention gals./sq. yd., min. 0.20

The asphalt binder will be 85/100 penetration asphalt cement.

Mechanical laydown equipment will be capable of handling full rolls of fabric and will be capable of laying the fabric smoothly without excessive wrinkles and/or folds. Stiff brush brooms to smooth the fabric and scissors to cut the fabric will be provided.

The area to be covered with fabric will be sprayed uniformly with asphalt binder at a rate of 0.22 to 0.25 gallons per square yard as directed by the engineer. Binder application will be accomplished with a pressure distributor for all surfaces except where there is no room to operate and hand spraying will be allowed. The width of the spray application is no more than six inches wider than the fabric width plus two inches. The binder will not be applied at a temperature greater than 325 degrees Fahrenheit. After the binder has been sprayed, the fabric will be unrolled or hand placed onto the binder with no delay. Every effort must be made to lay the fabric as smoothly as possible to avoid wrinkles. In no case will wrinkles large enough to cause laps of the fabric be permitted. Such wrinkles will be cut, laid out and flattened. The fabric will be broomed or squeegeed to remove air bubbles and make complete contact with the road surface.

The fabric will overlap the adjacent fabric panel a minimum of two inches. Additional binder will be applied to make the joints where overlap is greater than two inches. The transverse laps will be made in such a manner to avoid pickup by the paver. The direction of paving will be in the direction of the fabric placement. When placed as a strip treatment the strip will be 24 inches wide.

III. Replace original Bid Schedule with the Revised Bid Schedule attached:

IV. Delete Sheet 3 from Original Plans. Adding DIGOUTS (Sheets 1 and 2):

The Special Provisions as originally issued shall be used in submitting bids, and acknowledgment of receipt of all Addendum's shall be entered within the Bid Proposal. Failure to provide such acknowledgment shall render the bid as non-responsive and subject to rejection.

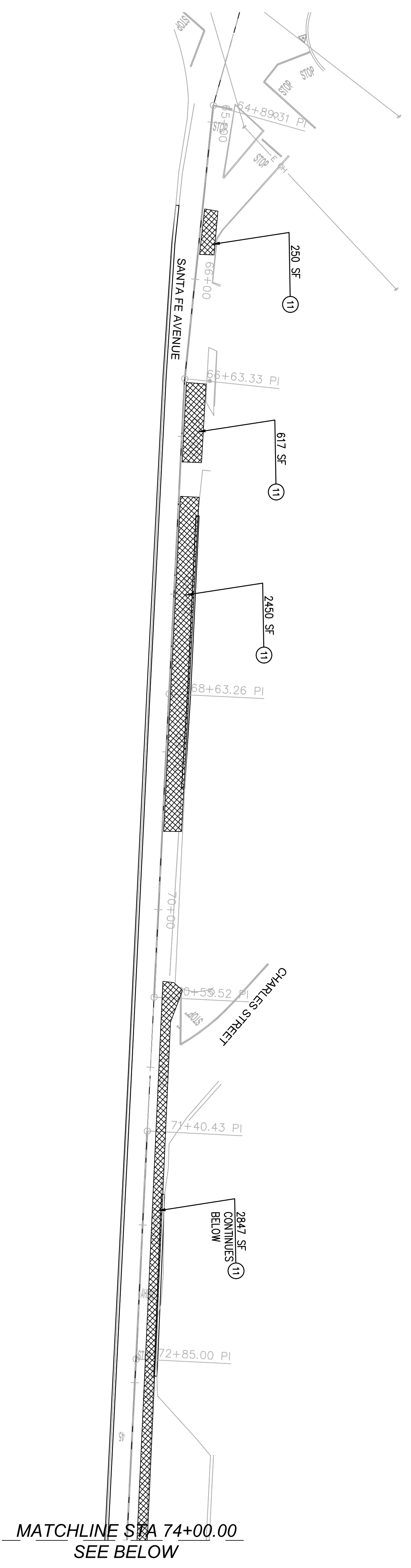
Date: January 22, 2020

BY ORDER OF THE CITY OF HUGHSON
COMMUNITY DEVELOPMENT DEPARTMENT

Prepared By Gary Taylor
Willdan Engineering

BID SCHEDULE **REV**

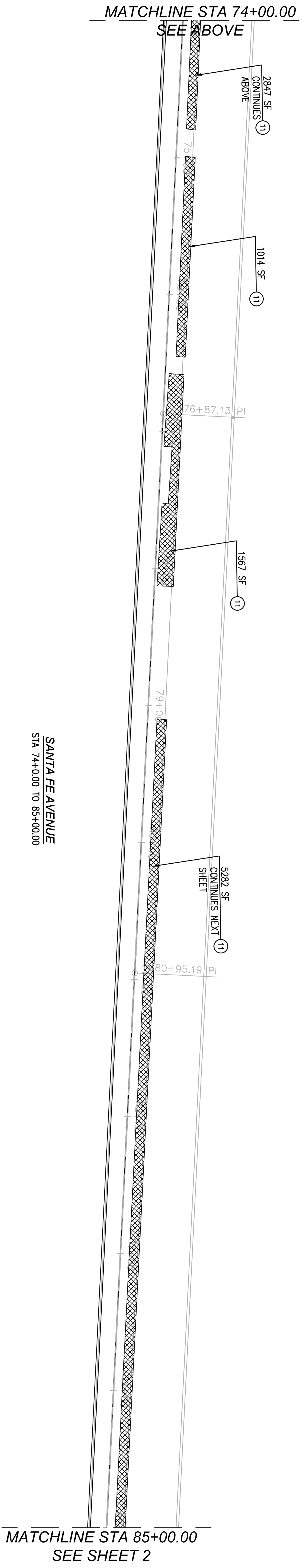
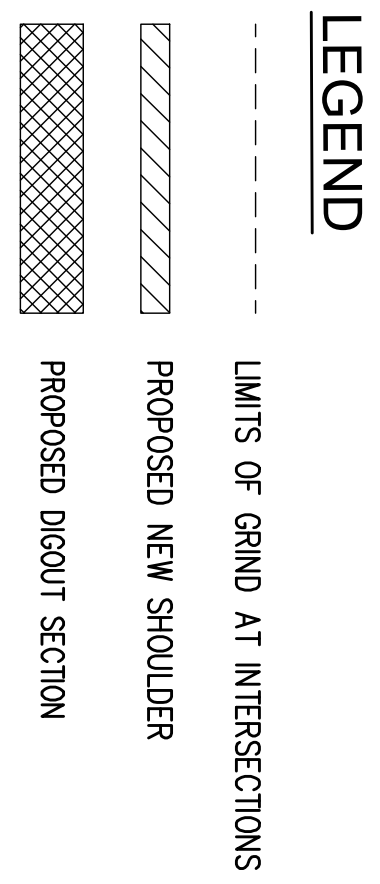
Item	F	Description	Qty	Units	Unit Price	Total
1		Mobilization	1	LS	\$	\$
2		Traffic Control Plan	1	LS	\$	\$
3		Sawcutting	3,900	LF	\$	\$
4		Shoulder Excavation	1	LS	\$	\$
5		Grinding/Milling (0.15')	8,500	SY	\$	\$
6		Asphalt Concrete Pavement (Type "A" - 0.30' 0.20')	1147 1,724	TON	\$	\$
7		Asphalt Concrete (Shoulder – 6" thick)	292	TON	\$	\$
8		Shoulder Backing - 2' wide	210	TON	\$	\$
9		SWPPP	1	LS	\$	\$
10		Thermoplastic Striping Detail 22	2,779	LF	\$	\$
11		Thermoplastic Striping Detail 27B	5,653	LF	\$	\$
12		Thermoplastic Striping Detail 27C	283	LF	\$	\$
13		Thermoplastic Markings, Limit Lines, Legends	95	SF	\$	\$
14		Adjust Utility Box	1	EA	\$	\$
15		Adjust Monument Wells	1	EA	\$	\$
16		Remove and Reconstruct 6" AC Full Depth (Dig-Outs)	16,211	SF		
17		Paving Fabric	84,000	SF		
BASE BID					\$	



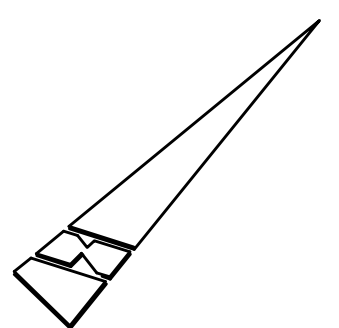
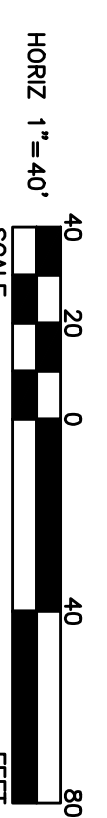
SANTA FE AVENUE
STA 65+54.61 TO 74+00.00

STA 68+25.00 TO 77+75.00

- CONSTRUCTION NOTES**
- 1 PROTECT EXISTING FACILITIES OUTSIDE LIMITS OF WORK
 - 2 ADJUST EXISTING UTILITIES TO FINAL GRADE PER PLAN
 - 3 CONFORM GRIND 0.15' DEEP
 - 4 2.0' WIDE SHOULDER, 0.46' AC OVER 0.87' AB, 2% TYPICAL AND 8:1 MAX SLOPE TO EXISTING GRADE FOR SHOULDER.
 - 5 THE CONTRACTOR SHALL PRESERVE AND PROTECT EXISTING SURVEY MONUMENTS. THE CONTRACTOR SHALL ADJUST EXISTING WELLS TO FINISH GRADE AND COORDINATE WITH THE CITY.
 - 6 INSTALL DETAIL 22 STRIPE
 - 7 PER CALTRANS STANDARD PLAN A20A
 - 8 INSTALL DETAIL 27B STRIPE
 - 9 PER CALTRANS STANDARD PLAN A20B
 - 10 INSTALL DETAIL 27C STRIPE
 - 11 PER CALTRANS STANDARD PLAN A20B
 - 12 INSTALL PAVEMENT MARKING
 - 13 PER CALTRANS STANDARD PLAN A24D
 - 14 INSTALL PAVEMENT MARKING
 - 15 PER CALTRANS STANDARD PLAN A24C
 - 16 REMOVE AND PLACE DIGOUT SECTION
 - 17 FULL DEPTH AC REPLACEMENT
 - 18 SEE DETAIL SHEET 2 OF 2



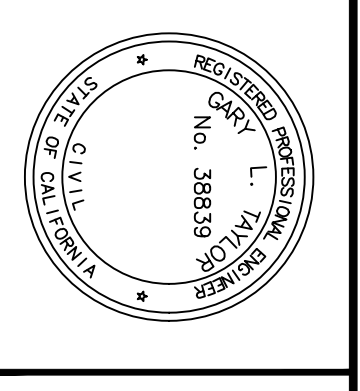
SANTA FE AVENUE
STA 74+00.00 TO 85+00.00



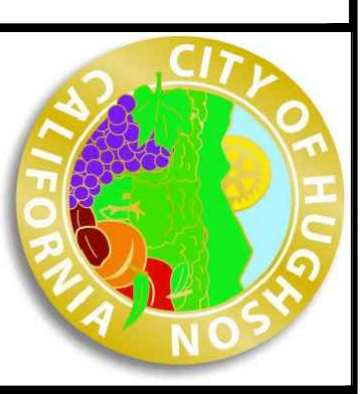
NO.	REVISION	BY	DATE

WILLDAN
Engineering
9281 Office Park Circle ~ Suite 100
Elk Grove, CA 95758 916.478.6002

DESIGNED:	
DRAWN:	
CHECKED:	



CITY OF HUGHSON
PUBLIC WORKS DEPARTMENT
7018 PINE STREET
HUGHSON, CALIFORNIA 95326
209.883.4054

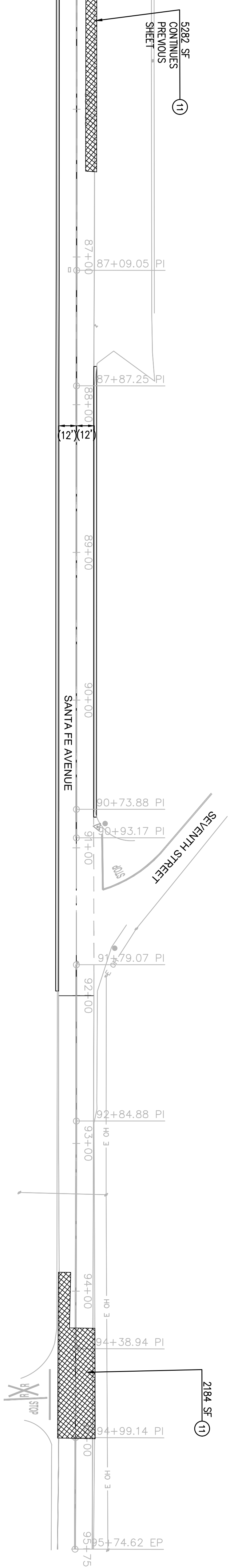


SANTA FE AVENUE STREET IMPROVEMENT PROJECT
DIGOUTS
STA 65+54.61 TO 85+00.00

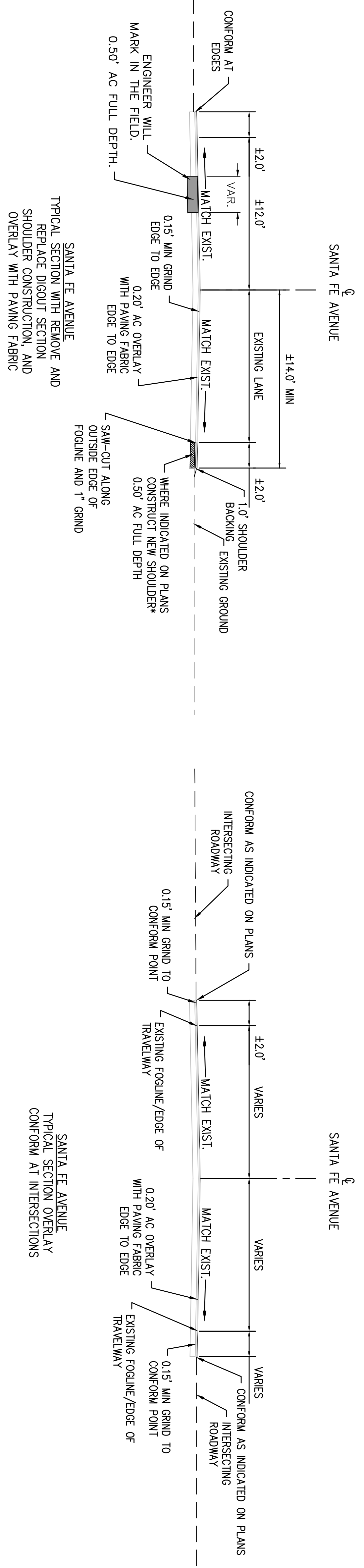
DATE:	JANUARY 21, 2020
SCALE:	1"=40'
PROJECT NO.:	109511

SHEET:	1
OF	2

MATCHLINE STA 85+00.00
SEE SHEET 1



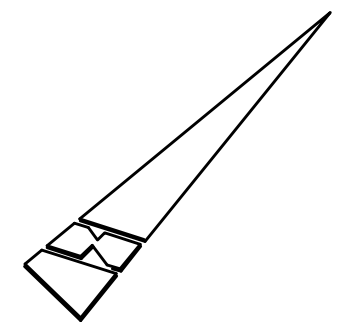
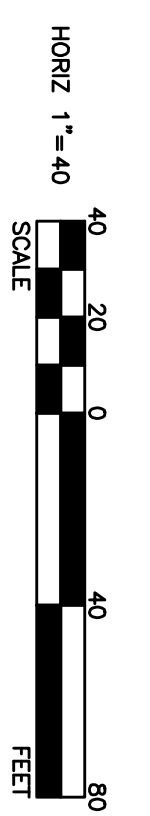
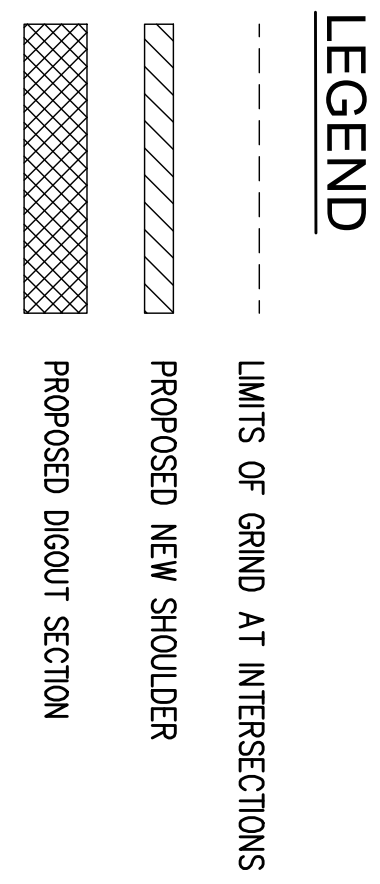
SANTA FE AVENUE
STA 85+00.00 TO END



SANTA FE AVENUE
TYPICAL SECTION WITH REMOVE AND REPLACE DIGOUT SECTION SHOULDER CONSTRUCTION, AND OVERLAY WITH PAVING FABRIC

SANTA FE AVENUE
TYPICAL SECTION OVERLAY CONFORM AT INTERSECTIONS

- CONSTRUCTION NOTES**
- 1 PROTECT EXISTING UTILITIES OUTSIDE LIMITS OF WORK
 - 2 ADJUST EXISTING UTILITIES TO FINAL GRADE PER PLAN
 - 3 CONFORM GRIND 0.15' DEEP
 - 4 2.0' WIDE SHOULDER, 0.46' AC OVER 0.5" AB, 2% TYPICAL AND 8:1 MAX SLOPE TO EXISTING GRADE FOR SHOULDER.
 - 5 THE CONTRACTOR SHALL PRESERVE AND PROTECT EXISTING SURVEY MONUMENTS. THE CONTRACTOR SHALL ADJUST MONUMENT WELL TO FINISH GRADE AND COORDINATE WITH THE CITY.
 - 6 INSTALL DETAIL 22 STRIPE
 - 7 PER CALTRANS STANDARD PLAN A20A
 - 8 INSTALL DETAIL 27B STRIPE
 - 9 PER CALTRANS STANDARD PLAN A20B
 - 9 INSTALL PAVEMENT MARKING
 - 9 PER CALTRANS STANDARD PLAN A24D
 - 10 INSTALL PAVEMENT MARKING
 - 10 PER CALTRANS STANDARD PLAN A24C
 - 11 REMOVE AND PLACE DIGOUT SECTION
 - 11 FULL DEPTH AC REPLACEMENT
- SEE DETAIL SHEET 2 OF 2

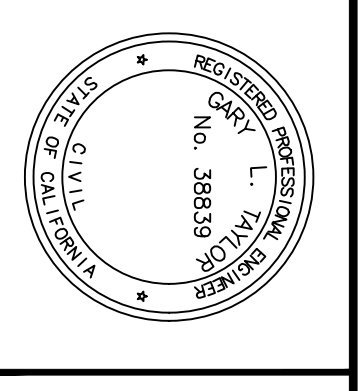


NO.	REVISION	BY	DATE

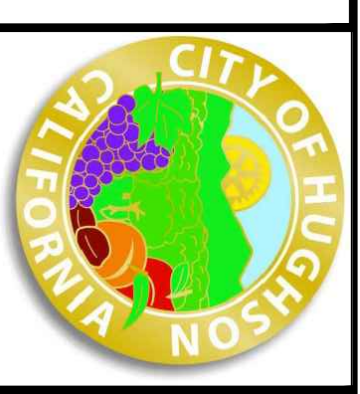
WILLDAN
Engineering

9281 Office Park Circle ~ Suite 100
Elk Grove, CA 95758 916-478-6002

DESIGNED:	
DRAWN:	
CHECKED:	



CITY OF HUGHSON
PUBLIC WORKS DEPARTMENT
7018 PINE STREET
HUGHSON, CALIFORNIA 95326
209.883.4054



SANTA FE AVENUE STREET IMPROVEMENT PROJECT
DIGOUTS
STA 85+00.00 TO END

DATE:	JANUARY 21, 2020
SCALE:	1"=40'
PROJECT NO.:	109511

SHEET:	2	OF	2
--------	---	----	---